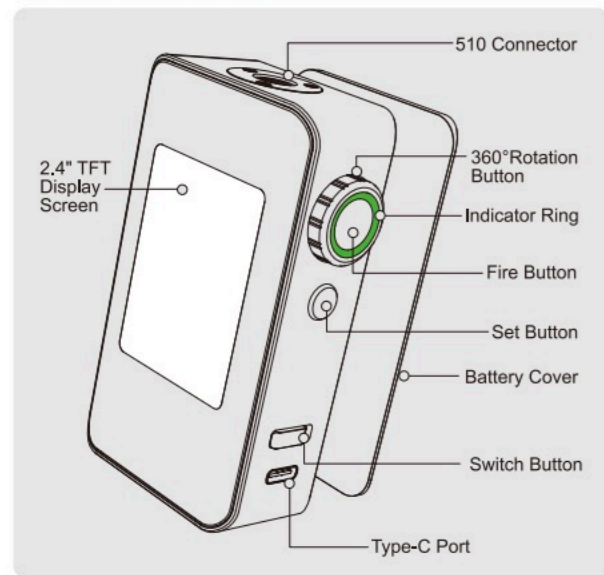


MAIN FEATURES



PRODUCT DESCRIPTION

COMPONENTS OVERVIEW



BASIC OPERATION

1. Power On/Off: Push-right the Switch button to turn on or push-Left to turn off the device.

ENGLISH

2. Bluetooth Indicator: Check the Bluetooth status on the main screen with 3 states:

- Off: Hide the icon.
- On, not connected: Flash the icon.
- Connected to app: Light up the icon solidly.
- If you have no need to use Bluetooth, turn off it properly to save battery power.

3. Screen-Off Vaping Mode:

- Press the SET button 3 times within 1.5 seconds to enable or disable Screen-Off Vaping Mode. If the device is powered off in this mode, it will return to normal screen-on mode when restarted.
- In Screen-Off Mode, the screen stays off, but vaping remains fully functional. The device can still fire, LED indicators will show status and warnings, and Bluetooth stays connected.

4. Vaping Mode Selection: Choose from POWER (default), TURBO, SS316, TI, NI, VOLTAGE, VPC on the main screen.



For a smoother experience, please refer to the following operations:

- Default Mode
- Press Fire Button to fire the device.

ENGLISH

○ Customize Mode

- a. Press the "Set Button" to start or exit setting.
- b. Rotate the Fire Button to navigate through the menu and adjust settings.
- c. Press the Fire Button to confirm your selection or adjustment.

5. POWER Mode: Set power from 5.0W-200W.

VOLTAGE Mode: Set voltage 0.7-8.0V.

Turn the 360° rotation button to adjust the wattage or voltage to the desired value under POWER or VOLTAGE mode. Rotating it clockwise increases the power in increments: 1W steps from 0-39W, 2W steps from 40W-98W, and 5W steps from 100W-195W. The adjustable range cycles from a minimum of 5W to a maximum of 200W.

6. TURBO Mode: Vape with maximum power output within battery capacity. No Boost function available in this mode.

7. Temperature Control Modes (SS316/TI/NI): The temperature and wattage can be adjusted under SS316/TI/NI Mode during operation to prevent the coil from being too hot regardless of fluid, wicking or airflow, a variety of undesirable situations can be prevented. Set temperature 100-315°C or 200-600°F, power 5.0-100W.

○ Adjust as above, with temperature cycling between °C/°F; rotate left or right ±5°C/°F. Parameters adjust independently per mode.

○ In these modes, "Boost" changes to "Watts," adjustable 5.0-100W (steps as POWER mode).

8. VPC Mode: Create custom power curve via the app (8 points, 0.5s each, total 4s). Simply fire to activate the power at each point along the curve, and after 4 seconds, the power at the 8th point will hold steady.

9. Boost Settings: Supports Boost functionality in POWER MODE to briefly increase the initial power output at the start of a puff.

- Three levels of Boost Function show as follow: SOFT/NORM/HARD.
- Watts in Temp Control: In SS316/TI/NI, show and adjust power (5.0-100W) instead of Boost.

ENGLISH

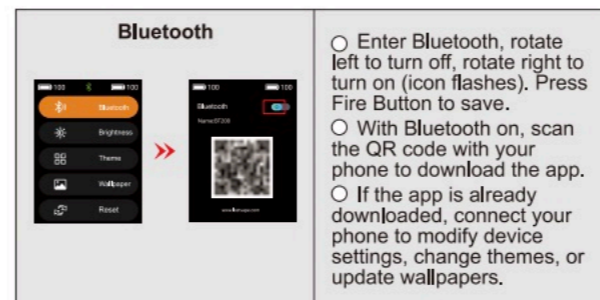
10. USER Presets: Save and recall your preferred settings with 3 slots (USER1-USER3).

- **Load:** Press Set button → rotate to select → short press Fire button to apply.
- **Save:** Press Set button → rotate → long press Fire button (1.5s) to save. "SAVE" will appear.
- **Auto Save:** Confirmed changes are auto-saved to the current USER slot.
- **APP Support:** Presets can also be managed via the mobile app.

11. PUFF Count/Time: Effective Puff time reaches 0.5s start counting. And the peak display of puff count is 9999.

○ **Reset:** Select Puff Count, rotate the button clockwise to show the puff count to "0000" (or rotate the button in the opposite direction to return to the original puff count), short press the Fire button (or wait for 5 seconds without action) to confirm the reset. Once the reset is confirmed, the previous puff count cannot be recovered.

12. Enter Menu: Select MENU, enter and rotate right or left to cycle through options, then press Fire button to access the secondary menu:



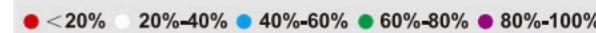
ENGLISH

<p>Brightness</p>	<p>○ Enter menu, adjust by rotating right or left.</p>
<p>Theme</p>	<p>○ Enter Theme, cycle 5 built-in themes. ○ Rotate right or left to preview, press Fire Button to apply.</p>
<p>Wallpaper</p>	<p>○ Enter Wallpaper (Theme 1 only), cycle 5 built-in + 1 app-imported wallpapers. ○ Rotate right or left to preview, press Fire Button to apply (or "+" for app prompt, 3s return).</p>
<p>Reset</p>	<p>○ Enter menu, choose YES (reset to factory) or NO (cancel). ○ Press Fire Button to confirm, return to main screen if reset.</p>
<p>About</p>	<p>○ Show device info (scroll with rotation if multi-page, inactive if single page). Press Fire Button to exit.</p>
<p>Return</p>	<p>○ Press Fire Button to go back to main SETTING.</p>

ENGLISH

13. Indicator Ring Status:

- When the battery is fully charged, the purple light stays on.
- When charging or vaping, the indicator light will be displayed according to the battery level. As follows:



DESCRIPTION OF WARNING

Low Battery: The screen will show "Low Battery" when you use it, the output will automatically turn off and the indicator will flash 3 times with purple light. Please charge the battery.

Check Atomizer: The screen will show "Check Atomizer". It means no atomizer detected, the main screen will display a resistance of 0.00Ω, and the indicator will flash 3 times with purple light.

Short Circuit: The screen will show "Short Circuit". the main screen will display the actual resistance value, and the indicator will flash 3 times with purple light.

Too Hot: The screen will show "Too Hot" and shut down when the internal board temperature exceeds 85°C, and the indicator will flash 3 times with purple light. You can use the device again when the temperature is back to 65°C.

Over 10s: The screen will show "Over 10s" and the output will automatically shut off when you vape continuously for over 10 seconds, with the indicator will flash 3 times with purple light.



Scan to Discover CENTAURUS BT200 (APP Download & Video)

ENGLISH