

CALIBURN

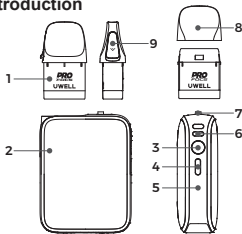
User Manual

UWELL
CALIBURN G5 KOKO

©2025 By SHENZHEN
UWELL TECHNOLOGY CO., LTD.
All Rights Reserved.

ENGLISH

Product Introduction



- | | | |
|--------------|---------------------|-----------------------------|
| 1. Cartridge | 4. TYPE-C interface | 7. Airflow adjustment value |
| 2. Display | 5. Main unit | 8. Mouthpiece |
| 3. Button | 6. Lanyard hole | 9. Filler plug |

Product Specification

Main material	PCTG, PC+ABS	Capacity	3.0ml/2.0ml
Dimension	84.8*49.1*21.8 mm (FDA, INT)	Maximum output power	35W
	81.8*49.1*21.8mm (TPD, CRC)	Cartridge specification	0.4Ω/0.6Ω 0.9Ω/1.2Ω
Net weight	Approximately 66.2g	Cell capacity	1600 mAh

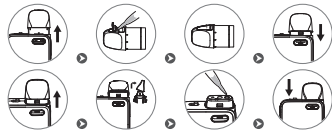
Quick Start Guide

1. Take the cartridge off the device, then remove the insulating film from the bottom;
2. Open the filler plug or mouthpiece to fill. After that, put the filler plug or mouthpiece back on, insert the cartridge into the main unit and let it stand for 10 minutes.
3. Take a drag to vape.

Detailed Instructions for Use

1. Filling

- a. Remove the cartridge and tear off the insulating film at the bottom before use for the first time.
- b. Open the filler plug or mouthpiece to fill.
- c. Put the filler plug or mouthpiece back on.
- d. Insert the cartridge into the main unit.



Precautions:

- a. Insert the drip tip of the bottle into the filling slot before filling.
- b. After filling, immediately put the filler plug or mouthpiece back on to prevent leakage.
- c. When the remaining e-liquid in the cartridge is below the "MIN" level, please refill in time.
- d. After filling a new cartridge for the first time, please let it stand for 10 minutes before use to prevent damage to the atomizing core caused by operation without e-liquids.

2. Vaping

When taking a direct puff, the interface will appear in full-screen by default, showing the current mode, power, and dynamic UI. In the simplified interface, only the LOGO icon, current mode, and power are constantly displayed.

3. Button Settings

When the device is powered on:
Press the button once to display UI interface;
Press the button twice consecutively to switch between STORM and WAVES mode;
Press the button three times consecutively to enter the output power adjustment mode;
adjustable ranges for different resistances:

Cartridge Resistance	Power Range
0.4Ω	19-35W
0.6Ω	13-25W
0.9Ω	9-15W
1.2Ω	6-11W

Press the button four times consecutively to switch between the simplified and full-screen interface;
Press the button five times consecutively to power the device on or off.

4. Low battery protection

If a single vaping duration exceeds six seconds, the functional area will flash three times, and the device will stop outputting.

5. Over-time protection

If a single vaping duration exceeds six seconds, the functional area will flash three times, and the device will stop outputting.

6. Short circuit protection

If a short circuit occurs at the output terminal, the full screen will flash three times, and the device will stop outputting.

7. Open circuit protection

If an open circuit occurs at the output terminal, the dashboard area will flash five times.

8. Cartridge insertion/removal prompt:

Inserting the cartridge: display the output power for 1 second before returning to the UI interface.
Removing the cartridge: Wake up the UI interface.

9. Charging

When the Type-C cable is inserted, charging mode is activated. The current battery level is displayed, and a lightning icon flashes. When charging is complete, the lightning icon remains steady, and the battery level shows 99. After the Type-C cable is removed, the display returns to the UI interface and turns off after five seconds.

10. Power on/off

Press the button five times consecutively to power the device on or off.

Warm Reminder

1. Please use a high-quality power adapter (5V/2A) and USB cable that have passed safety certification for charging.
2. If you carry this product on a plane, please remove the cartridge from the device and pack it separately to prevent leakage due to changes in aircraft pressure.
3. Avoid exposing this device to high temperature, flammable and explosive articles, low temperature, water, and humid environment during use and storage. Do not store it with hard objects during transportation to prevent damage to the device. It is recommended to charge the device at least once a month to extend its life time.
4. Do not use this device in a strong static electricity environment.