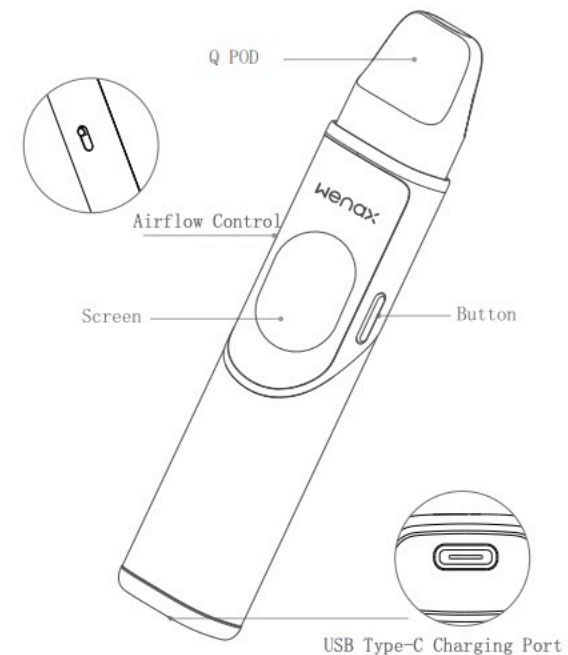


Thank you for choosing GEEKVAPE.
For better user experience, please read this User Manual before your vaping journey.
Please keep this User Manual for future reference

OVERVIEW

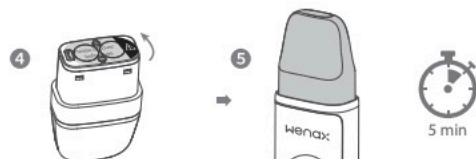


PRODUCT SPECIFICATIONS

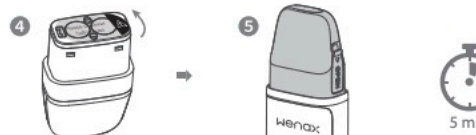
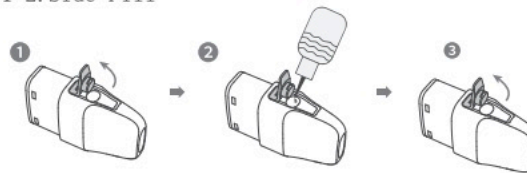
- Device dimension (cartridge excluded): 94.6*26.1*16.2mm
- Output power: 8W-30W
- Battery: 1250mAh built-in Lithium-ion battery
- Charging port and current: USB Type-C; 5V2A
- Display: 0.85-inch Color Screen
- Operating temperature: 10°C ~ 45 °C
- Charging temperature: 10°C~45 °C
- Storage temperature: -20°C~60 °C
- Relative humidity: 45% RH ~75% RH

E-LIQUID FILLING/RE-FILLING

1-1. Top Fill



1-2. Side Fill



- 1-1 Snap off the cartridge cap.
- 1-2 Unplug the silicone stopper of the cartridge.
- 2 Insert the drip tip of the E-liquid bottle into the hole and squeeze to fill. Do not overfill the cartridge to avoid any leakage.
- 3 1-1 Install the cartridge cap back firmly.
1-2 Plug the silicone stopper in firmly and sealed.
- 4 Tear off the sticker.
- 5 Please wait 5 minutes before use for the first time.

INSTRUCTIONS

1. **POWER ON/OFF:** Press the button 5 times within 2 seconds to power on/off the device.

2. **THEME:** Press the button 2 times within 2 seconds to switch between themes.

3. **VOLTAGE ADJUSTMENT:** The device smartly matches the recommended output power according to the resistance of the cartridge; you can still adjust the output power by pressing the button 3 times within 2 seconds and short press to adjust,

(i) As the cartridge resistance at 0.4Ω, the recommended output power at 25W, and the adjustable range is 25W-30W;

(ii) As the cartridge resistance at 0.6Ω, the recommended output power at 20W, and the adjustable range is 18W-25W;

(iii) As the cartridge resistance at 0.8Ω, the recommended output power at 15W, and the adjustable range is 12W-18W;

(iv) As the cartridge resistance at 1.2Ω, the recommended output power at 10W, and the adjustable range is 8W-12W.

4. **ANIMATION ON/OFF :** Long press the button for 3 seconds to turn on/off animation. The color of animation indicates battery status.



Battery ≥60%



Battery 21%-59%



Battery ≤20%

5. **CHARGING:** Insert the USB Type C cable in the charging port, the charging status will show on screen.

PROTECTION

If atomizer's resistance is ≤0.08ohm, a SHORT CIRCUIT warning will show on screen

If atomizer is not installed, a NO POD DETECTED warning will show on screen

If atomizer's resistance is >2.2ohm, a HIGH RESISTANCE warning will show on screen

If the battery voltage is too low, a LOW VOLTAGE warning will show on screen

If the temperature of the device is too high, an OVERHEAT warning will show on screen

If a single vape is over 10s, a SAFETY MODE warning will show on screen and device will be powered off

Either one of these warnings will stop the device from working for protection purpose.

CAUTIONS

• This device is not intended for use by person with reduced physical, sensory or mental capabilities, or lack of experience and knowledge, unless they have been given supervision or instruction concerning use of the device by a person responsible for their safety.

• Please ensure this device is kept away from children access.

• Please do not use or store this device at extreme condition including but not limited to temperature, humidity. Please refer to Product Specification on the requirement.

• Please do not expose this device at conditions exceeding the temperature range mentioned. The recommended temperature range of operating and charging is 10°C-45°C.

• Please use a standard USB output charger with proper charging current and voltage range while charging this device. The charger must comply with IEC/EN 60335 or IEC/EN 61558 or any other regulation according to your local laws.

• Please do not leave this device charging unattended at any time or expose this device to any situation that might cause deflection.

• The built-in battery type for this device is a rechargeable Lithium-ion battery. The battery model numbers of this device are 112040.

• The built-in battery in this device is not replaceable. Please do not attempt to change the form of the battery in this device.

• Please do not disassemble, crush, puncture, shred the built-in battery in this device.

• Please dispose this device according to your local environmental laws and guidelines including but not limited to separating from household waste, disposing to applicable collection point of electronics or electrical equipment or be recycled by an authorized service provider.

WARNINGS

• This product is intended for use with compatible e-liquid which may contain nicotine. Nicotine is an addictive substance.

• It is prohibited to sell and consume this product by individuals under the legal smoking age.

• This product is not recommended for non-smokers, pregnant or breastfeeding individuals.

• If you have any medical condition before or while or after using the device, please stop using immediately and consult with your healthcare professionals.service provider.

• Please do not attempt to repair or disassemble this

CUSTOMER SERVICE

Main Page: www.geekvape.com
Address: 605, Building 1, Qianhai Kexing Science Park, Labor Community, Xixiang Street, Bao'an District, Shenzhen
Phone: (001)866-985-6876
Email: support@geekvape.com

ANTI-COUNTERFEITING CHECK

- 1 Go to www.geekvape.com and find PRODUCT VERIFICATION at the bottom of the main page.
- 2 Scratch the code bar under the label on the box and enter the 12-digit security number in the blank on the
- 3 Click 'Go' and a pop-up window shall appear confirming if your product is authentically made.