

USER MANUAL

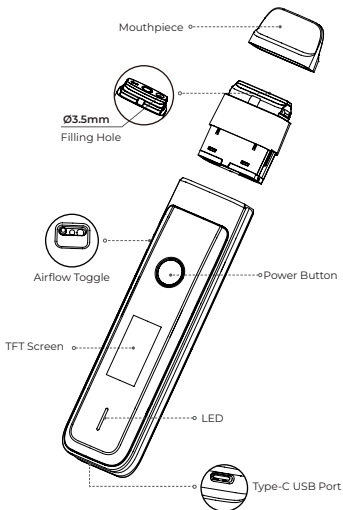
VAPORESSO XROS PRO 2

 VAPORESSO

Thank you for choosing VAPORESSO product. Please read this instruction carefully before use to ensure a perfect experience.

If there is any additional requirement about this product, please consult the local agent or contact us through our website: www.vaporesso.com

ENLARGED VIEW



SPECIFICATION

SPECIFICATIONS	3ml Version	2ml Version
Dimensions	125.6*25.7*18.4 mm	121.1*25.7*18.4 mm
Pod Capacity	3ml	2ml
Resistance:	0.4Ω/0.6Ω	0.4Ω/0.6Ω
Battery Capacity	2000mAh	
Charging	DC 5V/2A, Type-C	
Display	0.96" TFT display	

FIGURE 1

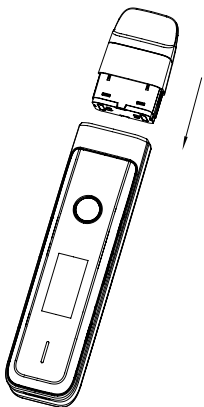


FIGURE 2

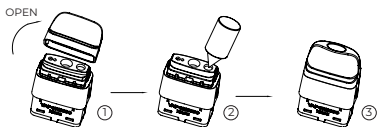
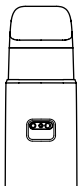


FIGURE 3



ENGLISH

USE INSTRUCTIONS

1. Install & Replace the Pod (Refer to FIGURE1)

Pull out the pod from the battery and install the new one.

*If it's the first time using the device, please tear off the sticker of the preinstalled pod.

2. Fill the E-liquid (Refer to FIGURE2)

Snap off the mouthpiece then squeeze the e-liquid through filling hole. After filling, put the mouthpiece back and make sure it's shut firmly.

*If it's the first time filling the e-liquid, please wait 5 minutes for the coil to prime.

3. Adjust Airflow (Refer to FIGURE3)

There is an airflow control toggle on the back of the battery. Adjust the toggle according to your vaping habits for different airflow effects.

4. Power ON/OFF

Click the power button 5 times in 2 seconds to power on or power off the device.

5. Start Vaping

The device is both button-activated and draw-activated. Press the power button or inhale directly through the mouthpiece and exhale to start vaping. The LED indicator will flash in different color according to the current theme during vaping.

6. Check the Battery Level

Check the battery level by clicking the power button or inserting the pod to light up the screen;

In power save mode, The LED indicator will stay in green/blue/red color to show the battery level after vaping or inserting the pod.

Battery Level	LED Color
70%~100%	Green
30%~70%	Blue
0~30%	Red

7. Charging

Please use the in-box Type-C cable to charge the device. The screen will play a charging animation with the current charge.

8. Theme Settings

Click the power button 2 times in 2 seconds to enter the settings interface, then click the power button to select the theme, press and hold for 2s to confirm.

9. Power/Mode Settings

When using the 0.6/0.7/0.8/1.0/1.2Ω PODs, click the power button 3 times in 2s to enter the vaping mode setting interface, then click the power button to choose PWR (POWER), NOR (NORMAL) or ECO(ECO) mode, and wait 3 seconds to save the current status and exit.

*When using the 0.4Ω POD, click the power button 3 times in 2s to set the vaping power, and click again to adjust the wattage.

10. Screen Lock/Button ON/OFF

Click the power button 4 times in 2 seconds to enter the settings interface, select "SCREEN LK", press and hold for 2s to lock the screen and the Power ON/OFF function still works. Select BUTTON ON/OFF, press and hold for 2s to turn on/off the button-activate function. When the screen is locked, press button 4 times in 2s to unlock it.

11. Puff clear/ Animate on/off

Click the power button 4 times in 2 seconds to enter the settings interface, then click the power button to select the Settings, press and hold for 2s to confirm.

12. Puff history check

Click the power button 4 times in 2 seconds to enter the settings interface, then click the power button to select the PUFF HISTORY, press and hold for 2s to confirm. Click the power button 1 time to switch among 1 day, 7 days, 30 days' puff history, the maximum and average puff number will be displayed, press and hold for 2s to leave puff history page.

PROTECTIONS

Low Resistance/Short-circuit: The screen displays "SHORT ATOMIZER" and the device will stop working.

High Temperature: The screen displays "OVER HEAT" and the device will stop working.

No Load/High Resistance: The screen displays "CHECK ATOMIZER" and the device will stop working.

Low Voltage/Over Discharging: The screen displays "BATTERY LOW" and the device will stop working.

Over Charging: The screen stays on the charging interface, and the device will stop charging.

Overtimes(8s): The screen displays "OVER TIME" and the device will stop working.

CAUTIONS

1. Please turn off the device when it is not in use.
2. Do not leave the charging device unattended.
3. Do not drop, throw or abuse your device, which may cause damage.
4. Please use a standard USB output charger with proper charging current and voltage range.
5. Keep away from the water or any flammable gas, liquid.
6. Do not expose the device to direct sunlight, dust, moisture or mechanical shock.
7. Do not expose the device to extreme temperature. (Recommended temperature range: 10~40°C using and 10~40°C while storing).
8. EEE Recycling: the product should not be treated as household waste, instead, it should be handed over to the applicable collection point for the recycling of electrical and electronic equipment.
9. Battery Recycling: the product battery should not be treated as household waste, instead, it should be handed over to the applicable used battery collection point for recycling.
10. Only have your device repaired by VAPORESSO. Do not attempt to repair it by yourself as damage or personal injury may occur.
11. Please keep the pins at the connection between the battery and the pod clean to ensure the best performance of the device.
12. If the product is taken on board an aircraft or encounters environments with significant changes in air pressure, it is advisable to store the pod and batteries separately, and avoid any liquid injection to prevent leakage and product damage.

WARNINGS

This refillable electronic cigarette is intended for use with compatible e-liquid, which may contain nicotine. Nicotine is an addictive substance and it is not suitable or recommended to use in following cases:

1. This device is not suitable for:

- Persons under the legal smoking age.
- Persons experiencing heart disease, stomach or duodenal ulcers, liver or kidney problems, long-term throat disease or difficult breathing due to bronchitis, emphysema or asthma.
- Persons with an overactive thyroid gland or experiencing pheochromocytoma (a tumour of the adrenal gland that can effect blood pressure).
- Persons taking certain medications like Theophylline, Ropinirole or Clozapine and etc.

2. This device is not recommended for:

- Non-smokers
- Pregnant or breastfeeding women

3. You may experience the following results if you use nicotine containing e-liquid with this product. If it happens, please consult a healthcare professional and show them this leaflet if possible:

Feeling faint / Nausea / Dizziness / Headache / Coughing / Irritation of the mouth or throat / Stomach discomfort / Hiccups / Nasal congestion / Vomition / Chest palpitations / pain or an irregular heart rate.

This device should not be used by persons under the legal smoking age.

LASER ANTI-COUNTERFEITING LABEL INSTRUCTIONS

Please keep the anti-counterfeiting code on the packaging for after-sale service.

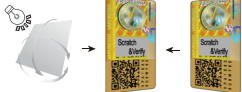


OLD
ANTI-COUNTERFEITING LABEL



NEW
ANTI-COUNTERFEITING LABEL

STEP 1 Check the label



Flip the label under light with different angle, you will see the Overt Magic lens text "V"A and the vertical "VAPORESSO" dynamically .

STEP 2 Verify the QR code



*For more information please consult our website at www.vaporesso.com or email us at support@vaporesso.com

WARRANTY STATEMENT

Limited 90-Day Warranty Terms

Warranty Period

VAPORESSO offers a limited 90-day warranty. The warranty period is 90 days from the date of purchase. If you want to claim a warranty for your device, please keep valid proofs of the date of purchase, such as invoices/receipts. If there are no valid evidences to refer to, the start time of the warranty period will be calculated from the date of manufacture of the device.

Terms of Warranty

For safety and hygiene reasons, please note that the following items or situations will **NOT** covered under warranty:

- ① The following opened or used items will not be returned, including e-liquids, cartridges, coils, drip tips, tanks, atomizers and rechargeable batteries.
- ② Under no circumstances will we accept returns and no refunds will be given if a non-defective item has been opened and used.
- ③ Product problems caused by human damages and misuse will not be covered by the warranty.
- ④ Any hardware-cracked, dismantled or modified product is not covered under warranty.
- ⑤ If the product happens to be faulty at the time of arriving, please inform us immediately prior to using it.

Except for the **Limited 90-Day Warranty Terms**, Vaporesso expressly disclaims all implied warranties of any kind with respect to this product, including, but not limited to, the implied warranties of merchantability or fitness for a particular purpose and all warranties provided by statute. Warranty claims will expire 90 days after the end user purchases the device.

For more information, please visit our website at www.vaporesso.com

Please keep the warranty card for the after-sale service.
Warranty will be disqualified if the warranty card is lost.

Warranty Claim Procedure

- ① Please kindly contact the seller you purchased the product from for repair or replacement.
- ② Alternatively, if you have any product related question, you can **scan the QR code on the back cover**.

Information Needed for 90-Day Limited Warranty Claim:

- ① Proof of purchase
- ② Product name and quantity
- ③ Batch number (VSGXXXX) and Security code (With pictures)
- ④ Descriptions on the product problem
- ⑤ Videos or pictures that reflect product problem

Notes

- ① It usually takes 5-10 days to verify all submitted warranty claim information. Please wait patiently.
- ② Once the requested warranty claim information is confirmed and approved, we will arrange a replacement for you. Please kindly note that if the original replacement product is out of stock or discontinued, we will tship an item of equal value to you with your consent.

* VAPORESSO reserves the right of final interpretation of the warranty claim service



Scan the QR code for
any product related question

Manufacturer: Shenzhen Smoore Technology Limited

Add: Building 8, Dongcai Industrial Park, Gushu Town,
Baoan District, Shenzhen, China 518102
Made in China

Uk Contact

Name: SMOORE UK CO., LTD
Address: 33 Cavendish Square, London W1G 0PW
Contact: +44 07759772593

Legal Or Natural Contact Person Within The Union

Name: Ascend vape
Address: 13 Rue Camille Desmoulins 92130 Issy-Les-
Moulineaux, France



www.vaporesso.com