

Thanks for your purchase of a VOOPOO product. For the better use of all the functions of this product, please carefully read the operation notes and detailed functional instructions before your first use of this product. If you have any problem with using this product, please contact our local agent or visit our official website at [www.voofoo.com](http://www.voofoo.com).

## Parameters

Size: 103\*29\*18.7 mm  
 Power Range: 5-30 W  
 Battery: 1200 mAh (Built-in)  
 Output Voltage: 3.2-4.2 V  
 Charging Voltage: 5 V/2 A  
 Resistance Range: 0.4-3.0 Ω  
 Compatibility: All the VMATE Cartridges

## Safety Protection

- 🕒 Overtime protection: 5 s
- ✅ Over temperature protection
- 🛡️ Short-circuit protection
- 🔌 Output over-current protection
- ⚡ Low battery protection
- 🔥 Max power protection
- 🔋 Overcharge protection

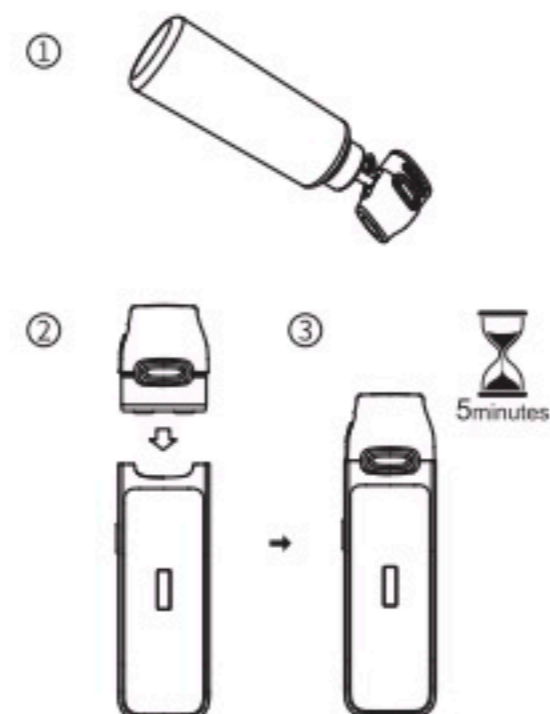
## Steps

### Step 1. Fill the cartridge with e-liquid

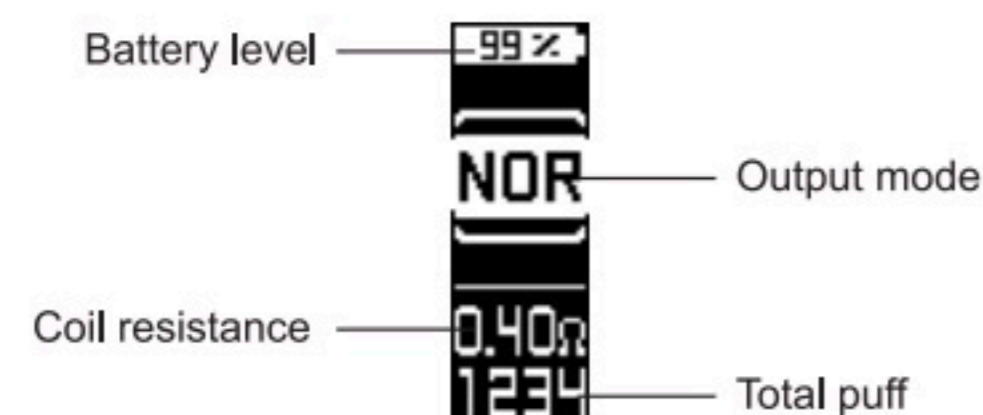
Pull out the cartridge and uncover the filling port, then fill the e-liquid in. It is recommended to keep two-thirds full.

### Step 2. Start to use the device

Insert the cartridge to the device. When you refill e-liquid to the new cartridge, please let it be fully saturated for about 5 minutes and you are free to use the device.



## Interface Introductions



## Function Descriptions

**Turn on the device:** Press the button for 5 consecutive times.

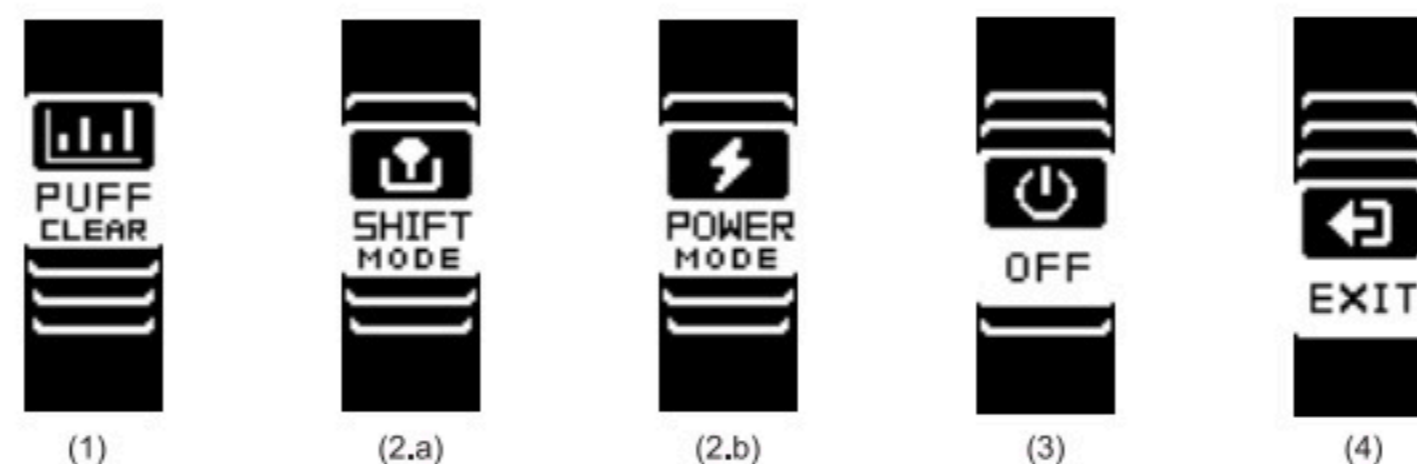
**Activation:** This product supports auto draw, so it will be activated when you draw from the POD.

**Screen on/off:** Short press the fire button for 2 consecutive times.

**Regulate output:** Press the button for 3 consecutive times.

**Menu operations:**

**Enter menu:** Press the button for 5 consecutive times and it will enter the menu interface. Press the button shortly to choose functions and a long press to confirm the function.



### 1) Puff clear

### 2) Switch output mode

**a. Shift mode:** Shift mode offers 3 different output options to adapt to various usage scenarios.

–SPT: Releases powerful clouds with a robust power output.

–NOR: Provides the most comfortable vaping experience with a normal power output.

–ECO: Delivers light clouds by reducing power and e-liquid consumption.

**b. Power mode:** Users can manually adjust the output power as needed.

### 3) Turn off the device

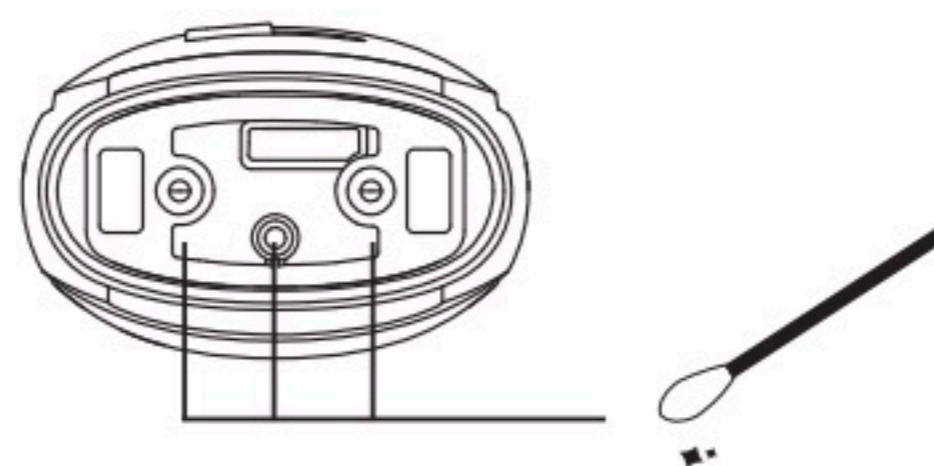
### 4) Exit menu interface

## Maintenance and Cleaning

1. When using the device, you may notice occasional liquid condensation on the outside of the atomizer. The physical law determines that the liquid will atomize and then condense to form condensate, which is inevitable.

2. In daily use, wet paper can often be used to wipe the connection between the atomizer and device to avoid poor connection between the atomizer and device.

3. When a small amount of condensate is found inside the device during use, we recommend pulling out the atomizer, reversing the device and shaking for a few seconds.



## Notes

- This product is not recommended for minors, non-smokers, pregnant or breast-feeding women, or anyone at risk of heart disease, depression and asthma.
- Please keep the device away from heat, fire and water. This device should be stored in a cool and shady environment.
- Please do not drop, throw or immerse the device in the water.
- Please turn off or lock the device to avoid accidental firing when you carry it out.
- Please rationally use the device according to your personal situation. If discomfort occurs, please stop using it immediately.
- EEE Recycling: This product should not be treated as household waste, instead it should be taken to the collection place for the recycling of electrical and electronic equipment.
- Battery Recycling: The battery of this product should not be treated as household waste, instead it should be taken to the used battery collection place for recycling.
- It is recommended to use the USB cable provided by VOOPOO to charge the device.
- During the long-term unused period of the device, it is recommended to charge the device regularly to prevent discharge!
- The storage period of the equipment shall be within 3 months: the ambient temperature ranges from -5 - 30 °C, with humidity 25 %±75 % RH. Operating temperature of electronic cigarette: 0 °C-40 °C!
- Disassembly is prohibited after product failure!
- Only for indoor charging, please use UL-certified USB charger to charge the device to avoid the danger of fire and explosion!

## Warranty ( Quality Assurance Certificate )

A three-month warranty is provided. During the warranty period, we will provide maintenance and replacement services. Please note the following conditions.

- It only applies to the products registered on VOOPOO after-sales service website. (Scan the QR code below to register)
- We assume no liability for damage caused by the user's negligence or accident.
- We are not responsible for any damage that occurs during use, maintenance or modification that does not conform to the operating instructions in the manual.
- The defects not caused by processing and the appearance problems are not covered in the warranty.
- After-sales service for the coil is not provided.

## Warm Prompt

### Pod Leakage

There is a possibility of e-liquid leakage at high pressure when you travel by air. Therefore, please keep your pods away from other important objects.

### Deal with Condensate

There may be slight condensation of fluid due to the difference between indoor and outdoor temperature when you use the device. It is advisable to take out the pod, and shake it downwards.