

## SAFETY WARNINGS

**1.Warning for vulnerable consumer groups:** This product is not recommended for minors, pregnant or breastfeeding women, or anyone at risk of heart disease, depression, and asthma.

**2.Battery Caution:** Do not expose the device to extreme temperatures. Do not disassemble the device without Lost Vape's recommendation.

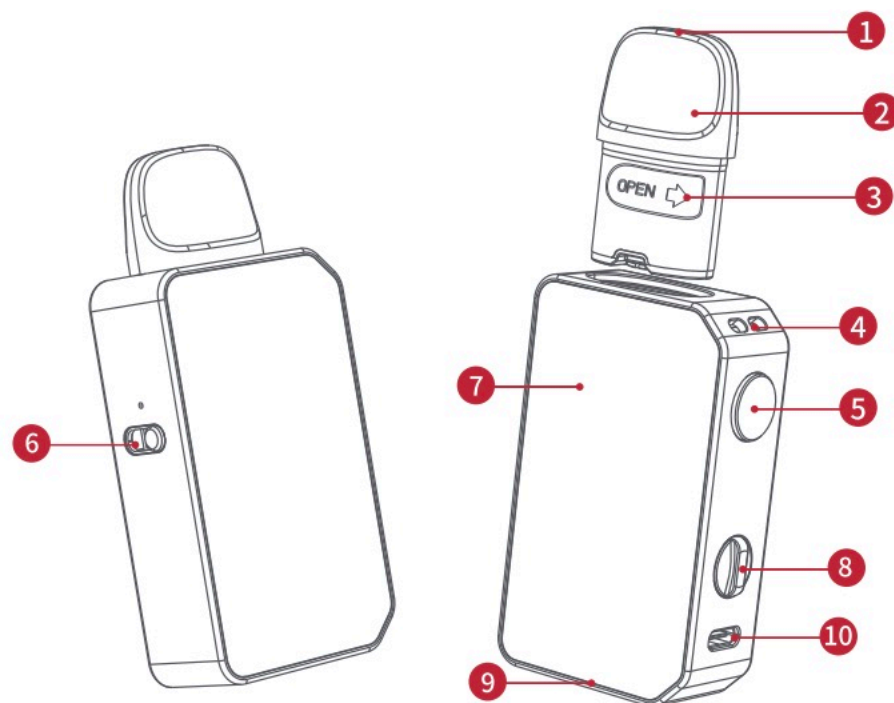
**3.Cartridge Attention:** Do not dry burn the cartridge or coil. It is essential to prime a new coil. Simply fill your tank with e-liquid and leave it to stand for at least 5 minutes before vaping. As above, this will allow the cotton inside your new coil to absorb plenty of e-liquid ready for that first, tasty vape. All cartridges/coils are not covered under warranty once they are opened, used, or filled with liquids.

**4.Warranty:** The device is covered by a 3-month warranty from the date of purchase.

**5.Contacts:** For further questions or inquiries, please contact Lost Vape by email at support@lostvape.com or visit our website: www.lostvape.com.

## PRODUCT DESCRIPTION

### COMPONENTS OVERVIEW



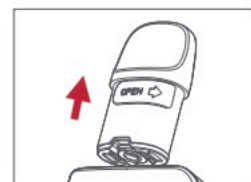
① Mouthpiece	⑥ Airflow Control Button
② Cartridge	⑦ Single Panel Indicator
③ E-liquid Refilling Plug	⑧ Adjusting Power Knob
④ Lanyard Hole	⑨ Built-in Battery
⑤ Fire Button	⑩ Type-C Port

### BASIC PARAMETERS

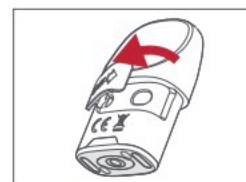
Dimension	20*43.3*95mm
Net Weight	88.7±5g
Battery Capacity	1400mAh
Battery Voltage	3.0V-4.2V
Power Range	5W-40W
Coil Resistance Range	0.25Ω-2.0Ω
Pod Capacity	3ml (Standard) / 2ml (TPD)
Charging Voltage	5V/1.4A
Type-C Cable	Support 5V/2A Charger
Body Material	Aluminium Alloy, PC

## BASIC OPERATION

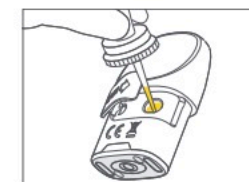
### FILL WITH E-LIQUID



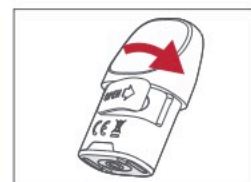
1. Take out the pod.



2. Open the e-liquid refilling plug.



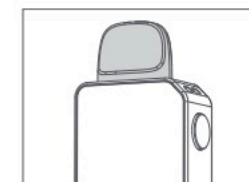
3. Refill the pod from the filling slot.



4. Seal the plug after filling.



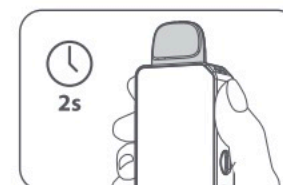
5. Put the pod back into the device.



6. Leave it to stand for at least 5 minutes before vaping

### TURN ON / OFF

Press the Fire button 5 times consistently within 2 seconds to TURN ON/OFF the device.



### ADJUSTMENT LOCK/UNLOCK

Press the Fire button 3 times consistently within 2 seconds to Lock /Unlock the button. Note that the Auto Draw feature will remain operational in this mode.

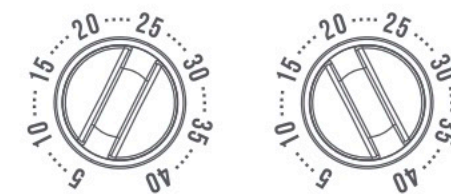
### CHARGING MODE

The LED panel indicators will flash during vaping or charging to indicate battery capacity.

- 0% - 20%
- 20% - 40%
- 40% - 60%
- 60% - 80%
- 80% - 100%

### HOW TO ADJUST WATTAGE

Clock wise/Counter Clock wise the Power Knob to increment/decrease power; The max. power is 40W and the min. power is 5W. Different coil resistance Ω has different max./min. power limit.



## WARNING DESCRIPTION

**Low Battery:** The LED panel indicator will flash 5 times with red light and output will automatically cut off once the battery voltage below 3.3V before use or lower than 2.85V when you are using.

**Check Atomizer:** The LED panel indicator will flash 3 times when there is no atomizer detected.

**Short Circuit:** The LED panel indicator will flash 3 times with white light and has no output when the atomizer is short circuited.

**Too Hot:** The LED panel indicator will light up in red for 5 seconds and the device will shut down when the temperature of the internal board is higher. You can use the device again when the temperature is back to 65°C.

**Over 10s:** Output will automatically cut off and the LED panel indicator will flash 8 times when you vape over 10s continuously.