

# CALIBURN

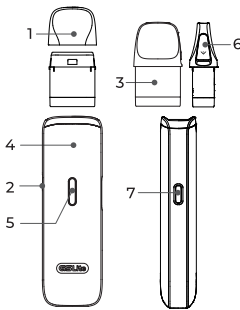
User Manual

**UWELL**  
CALIBURN GS Lite

©2025 By SHENZHEN  
UWELL TECHNOLOGY CO., LTD.  
All Rights Reserved.

## ENGLISH

### Product Introduction



- |                     |                             |
|---------------------|-----------------------------|
| 1. Mouthpiece       | 2. Airflow adjustment valve |
| 3. Cartridge        | 4. Main unit                |
| 5. LED indicator    | 6. Filler plug              |
| 7. TYPE-C interface |                             |

### Product Specification

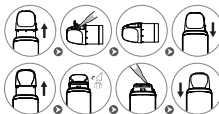
Main material	PCTG, PC
Dimension	115.4*30.2*18mm (FDA,INT) 112.2*30.2*18mm (TPD,CRC)
Net weight	Approximately 5g
Capacity	3.0ml(2.0ml)
Maximum output power	35W
Cartridge resistance	0.4Ω/0.6Ω/0.9Ω/1.2Ω
Cell capacity	1600mAh

### Quick Start Guide

1. Take the cartridge off the device, then remove the insulating film from the bottom;
2. Open the filler plug or mouthpiece to fill. After that, put the filler plug or mouthpiece back on, insert the cartridge into the main unit and let it stand for 10 minutes.
3. Take a drag to vape.

### Detailed Instructions for Use

1. **Filling**
  - a. Remove the cartridge and tear off the insulating film at the bottom before use for the first time.
  - b. Open the filler plug or mouthpiece to fill.
  - c. Put the filler plug or mouthpiece back on.
  - d. Insert the cartridge into the main unit.



### Precautions:

- a. Insert the drip tip of the bottle into the filling slot before filling.
- b. DO NOT leave the filling slot open for a long time. After filling, immediately put the filler plug or mouthpiece back on and make sure it is pressed in place to prevent leakage.
- c. After filling a new cartridge for the first time, please let it stand for 10 minutes before use to prevent damages to the pod caused by operation without e-liquids.
- d. When the remaining e-liquid in the cartridge is below the "MIN" level, please refill in time.

### 2. Airflow adjustment

Adjust the flow rate via the airflow adjustment valve on the side.

### 3. Insertion/removal

When the cartridge is inserted, the LED indicator flashes twice to indicate the current battery level.  
When the cartridge is removed, the LED indicator flashes twice.

### 4. Vaping

Take a drag to vape when the device is turned on. All LED indicators will flash in a running light pattern from the bottom bar, returning to the current battery level after vaping stops.

### 5. Battery level indicator

The number of illuminated bars corresponds to the current battery level.

Four bars light up green when the battery is 75%-100%  
Three bars light up blue when the battery is 50%-74%  
Two bars light up yellow when the battery is 25%-49%  
One bar lights up red when the battery is 0%-24%

### 6. Charging

Connection for charging: A single bar will flash to indicate the current battery level.

Full charge: LED indicators will turn off when the battery is at 100% charge.

Disconnection from charging: LED indicators light up to indicate the current battery level.

### 7. Protection and Prompt

- a. Short-circuit protection: When a short-circuit occurs, the red light flashes 3 times during vaping and the device stops outputting.
- b. Low voltage protection: When the battery power is insufficient during output, the red light flashes 10 times and the device stops outputting.
- c. Overtime protection: When the vaping exceeds 6 seconds, the green light flashes 5 times and the device stops outputting.
- d. Open-circuit protection: When an open-circuit occurs under no cartridge or disconnection situation, there is no output during vaping and the blue light flashes 3 times.

### Warm Reminder

1. Please use a high-quality power adapter (5V/1A) and USB cable that have passed safety certification for charging.
2. If you carry this product on a plane, please remove the cartridge from the device and pack it separately to prevent leakage due to changes in aircraft pressure.
3. Avoid high temperature, flammable and explosive articles, low temperature, water, and humid environment during use and storage. Do not store it with hard objects during transportation to prevent damage to the device. It is recommended to charge the device at least once a month to extend its life time.
4. Do not use this device in a strong static electricity environment.